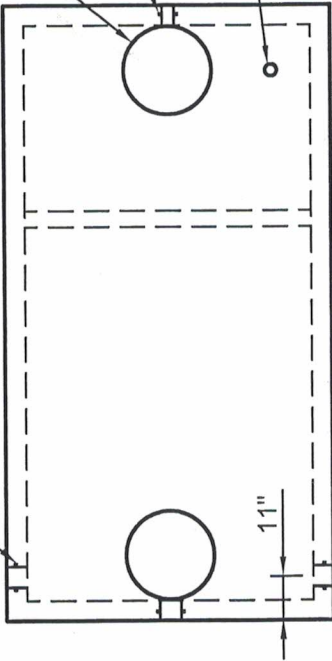


4" POLY IV HIGH PRESSURE CLOSED  
END SEAL, BY POLYLOK (TYP OF 3)

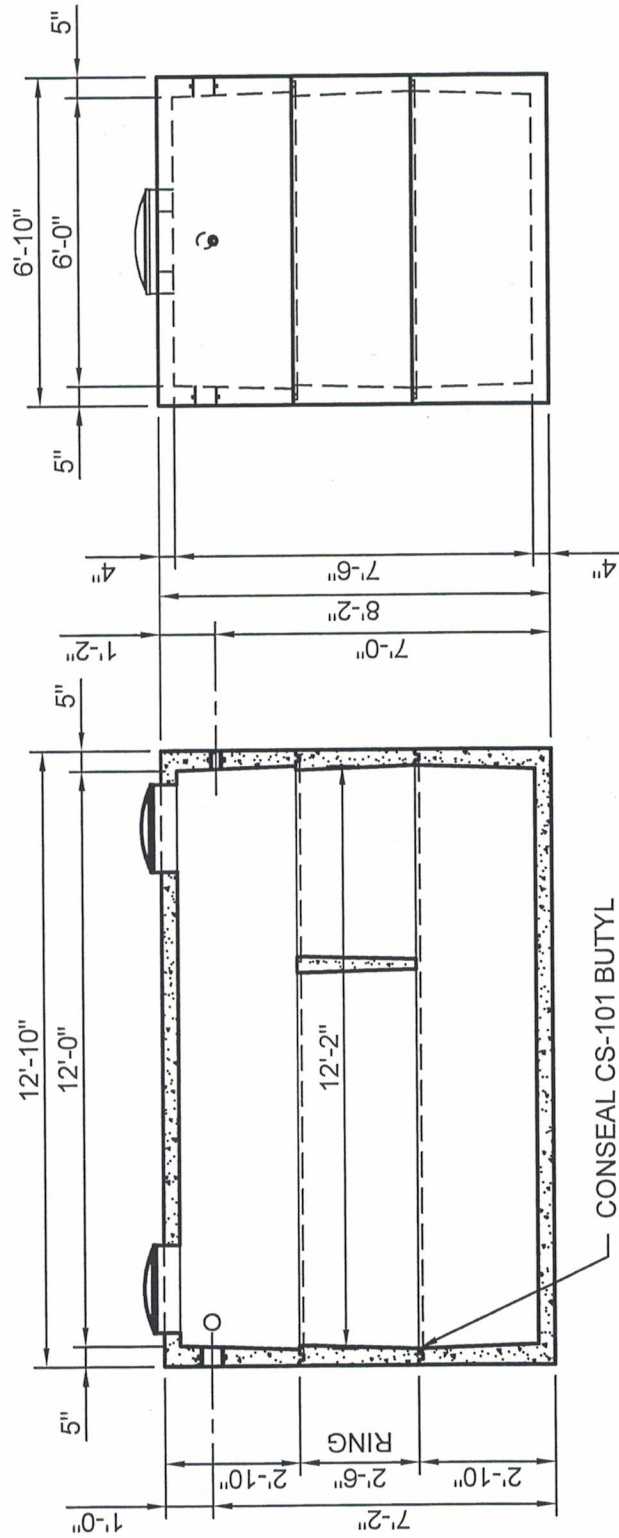


6" PLASTIC RISER  
WITH 20" RISER LID,  
BY TUF-TITE

2" Z-LOK PIPE TO  
MANHOLE CONNECTOR,  
BY A-LOK

3"Ø PVC PIPE FOR  
ELECTRICAL CONTROLS  
AND SERVICE

PLAN VIEW



END VIEW

SIDE VIEW

**Stiger**  
Precast, Inc.  
17793 St Hwy. 231  
Nevada, OH 44849

740-482-2313  
800-426-2116

Scale: 1/4" = 1'-0"  
Date: 12/22/2015

**3,000 GALLON  
LIFT STATION**

Dwg No.  
**LS  
3000**

# Stiger Precast, Inc.

## 3,000 Gallon Lift Station

Water Depth (IN)	Tank Width (IN)	Tank Length (IN)	Change In Depth (IN)	Incremental Change In Volume (GAL)	Baffle Width (IN)	Baffle 1 Length (IN)	Baffle 1 Volume (Gal)	Tank volume (Gal)	Distance From Inside Top Of Tank To Water (Gal)
90	72.00	144.00	1.00	44.88				4093.01	0
89	72.07	144.07	1.00	44.94				4048.13	1
88	72.13	144.13	1.00	45.00				4003.19	2
87	72.20	144.20	1.00	45.07				3958.19	3
86	72.27	144.27	1.00	45.13				3913.12	4
85	72.33	144.33	1.00	45.19				3867.99	5
84	72.40	144.40	1.00	45.25				3822.80	6
83	72.47	144.47	1.00	45.32				3777.54	7
82	72.53	144.53	1.00	45.38				3732.23	8
81	72.60	144.60	1.00	45.44				3686.84	9
80	72.67	144.67	1.00	45.51				3641.40	10
79	72.73	144.73	1.00	45.57				3595.90	11
78	72.80	144.80	1.00	45.63				3550.33	12
77	72.87	144.87	1.00	45.69				3504.70	13
76	72.93	144.93	1.00	45.76				3459.00	14
75	73.00	145.00	1.00	45.82				3413.25	15
74	73.07	145.07	1.00	45.88				3367.43	16
73	73.13	145.13	1.00	45.95				3321.54	17
72	73.20	145.20	1.00	46.01				3275.60	18
71	73.27	145.27	1.00	46.07				3229.59	19
70	73.33	145.33	1.00	46.13				3183.52	20
69	73.40	145.40	1.00	46.20				3137.38	21
68	73.47	145.47	1.00	46.26				3091.18	22
67	73.53	145.53	1.00	46.32				3044.92	23
66	73.60	145.60	1.00	46.39				2998.60	24
65	73.67	145.67	1.00	46.45				2952.21	25
64	73.73	145.73	1.00	46.51				2905.76	26
63	73.80	145.80	1.00	46.58				2859.24	27
62	73.87	145.87	1.00	46.64				2812.67	28
61	73.93	145.93	1.00	46.70				2766.03	29
60	74.00	146.00	1.00	46.77	4.00	72.00	1.25	2719.32	30
59	72.07	144.07	1.00	44.94	3.95	72.07	1.23	2673.80	31
58	72.13	144.13	1.00	45.00	3.90	72.13	1.22	2630.09	32
57	72.20	144.20	1.00	45.07	3.85	72.20	1.20	2586.30	33
56	72.27	144.27	1.00	45.13	3.80	72.27	1.19	2542.44	34
55	72.33	144.33	1.00	45.19	3.75	72.33	1.17	2498.50	35
54	72.40	144.40	1.00	45.25	3.70	72.40	1.16	2454.48	36
53	72.47	144.47	1.00	45.32	3.65	72.47	1.14	2410.38	37
52	72.53	144.53	1.00	45.38	3.60	72.53	1.13	2366.21	38
51	72.60	144.60	1.00	45.44	3.55	72.60	1.12	2321.96	39
50	72.67	144.67	1.00	45.51	3.50	72.67	1.10	2277.64	40
49	72.73	144.73	1.00	45.57	3.45	72.73	1.09	2233.23	41
48	72.80	144.80	1.00	45.63	3.40	72.80	1.07	2188.75	42
47	72.87	144.87	1.00	45.69	3.35	72.87	1.06	2144.19	43
46	72.93	144.93	1.00	45.76	3.30	72.93	1.04	2099.55	44
45	73.00	145.00	1.00	45.82	3.25	73.00	1.03	2054.84	45
44	73.07	145.07	1.00	45.88	3.20	73.07	1.01	2010.05	46
43	73.13	145.13	1.00	45.95	3.15	73.13	1.00	1965.18	47
42	73.20	145.20	1.00	46.01	3.10	73.20	0.98	1920.23	48
41	73.27	145.27	1.00	46.07	3.05	73.27	0.97	1875.20	49
40	73.33	145.33	1.00	46.13	3.00	73.33	0.95	1830.10	50
39	73.40	145.40	1.00	46.20	2.95	73.40	0.94	1784.92	51
38	73.47	145.47	1.00	46.26	2.90	73.47	0.92	1739.66	52
37	73.53	145.53	1.00	46.32	2.85	73.53	0.91	1694.32	53
36	73.60	145.60	1.00	46.39	2.80	73.60	0.89	1648.90	54
35	73.67	145.67	1.00	46.45	2.75	73.67	0.88	1603.41	55
34	73.73	145.73	1.00	46.51	2.70	73.73	0.86	1557.83	56
33	73.80	145.80	1.00	46.58	2.65	73.80	0.85	1512.18	57
32	73.87	145.87	1.00	46.64	2.60	73.87	0.83	1466.45	58
31	73.93	145.93	1.00	46.70	2.55	73.93	0.82	1420.64	59
30	74.00	146.00	1.00	46.77	2.50	74.00	0.80	1374.75	60
29	73.93	145.93	1.00	46.70				1328.79	61
28	73.87	145.87	1.00	46.64				1282.08	62
27	73.80	145.80	1.00	46.58				1235.44	63
26	73.73	145.73	1.00	46.51				1188.86	64
25	73.67	145.67	1.00	46.45				1142.35	65
24	73.60	145.60	1.00	46.39				1095.90	66
23	73.53	145.53	1.00	46.32				1049.51	67
22	73.47	145.47	1.00	46.26				1003.19	68
21	73.40	145.40	1.00	46.20				956.93	69
20	73.33	145.33	1.00	46.13				910.73	70
19	73.27	145.27	1.00	46.07				864.60	71
18	73.20	145.20	1.00	46.01				818.53	72
17	73.13	145.13	1.00	45.94				772.52	73
16	73.07	145.07	1.00	45.88				726.58	74
15	73.00	145.00	1.00	45.82				680.69	75
14	72.93	144.93	1.00	45.76				634.87	76
13	72.87	144.87	1.00	45.69				589.12	77
12	72.80	144.80	1.00	45.63				543.43	78
11	72.73	144.73	1.00	45.57				497.80	79
10	72.67	144.67	1.00	45.50				452.23	80
9	72.60	144.60	1.00	45.44				406.72	81
8	72.53	144.53	1.00	45.38				361.28	82
7	72.47	144.47	1.00	45.32				315.90	83
6	72.40	144.40	1.00	45.25				270.59	84
5	72.33	144.33	1.00	45.19				225.33	85
4	72.27	144.27	1.00	45.13				180.14	86
3	72.20	144.20	1.00	45.07				135.01	87
2	72.13	144.13	1.00	45.00				89.95	88
1	72.07	144.07	1.00	44.94				44.94	89
0	72.00	144.00	1.00					0.00	90