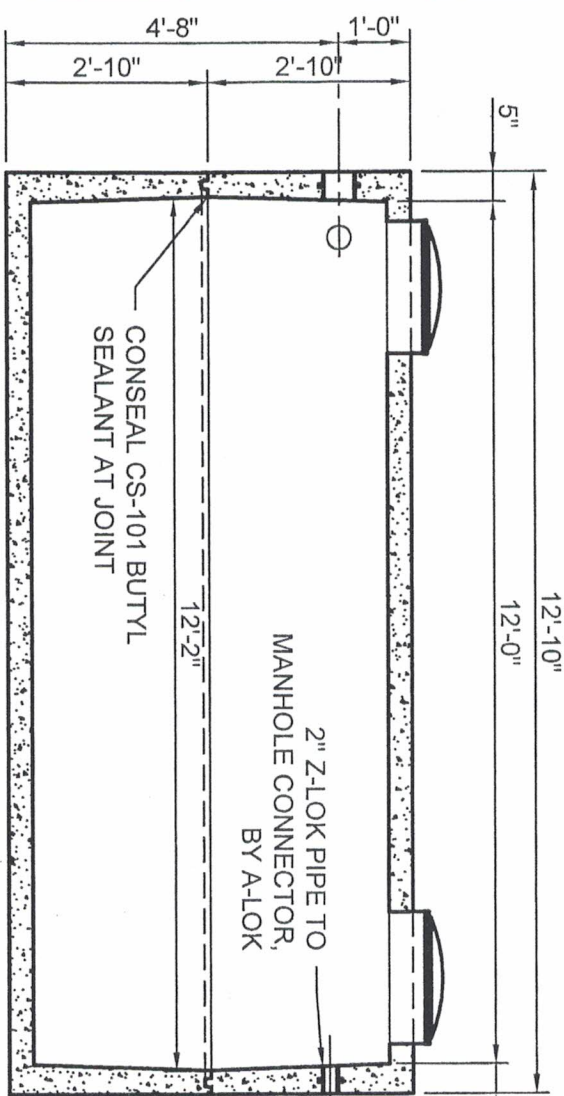
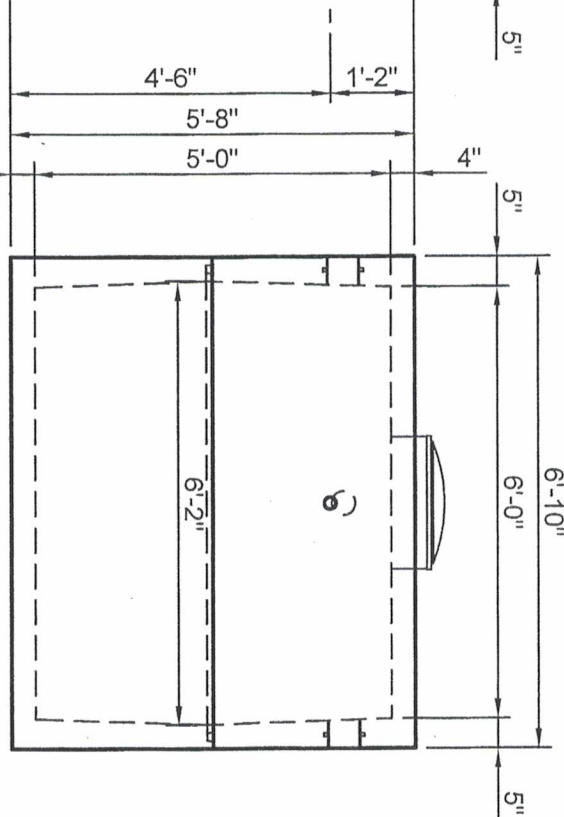


PLAN VIEW



SIDE VIEW



END VIEW

4" POLY IV HIGH PRESSURE CLOSED
END SEAL, BY POLYLOK (TYP OF 3)

6" PLASTIC RISER
WITH 20" RISER LID,
BY TUF-TITE

3"Ø PVC PIPE FOR
ELECTRICAL CONTROLS
AND SERVICE

2" Z-LOK PIPE TO
MANHOLE CONNECTOR,
BY A-LOK

CONSEAL CS-101 BUTYL
SEALANT AT JOINT

Stiger
Precast, Inc.
17793 St Hwy. 231
Nevada, OH 44849
740-482-2313
800-426-2116

Scale: 3/8" = 1'-0"
Date: 12/22/2015

2,000 GALLON
LIFT STATION

Dwg No.
**LS
2000**

Stiger Precast, Inc.

2,000 Gallon Lift Station

| Water Depth (IN) | Tank Width (IN) | Tank Length (IN) | Change In Depth (IN) | Incremental Change in Volume (GAL) | Tank volume (Gal) | Distance From Inside Top Of Tank To Water (Gal) |
|------------------|-----------------|------------------|----------------------|------------------------------------|-------------------|---|
| 60 | 72.00 | 144.00 | 1.00 | 44.88 | 2749.25 | 0 |
| 59 | 72.07 | 144.07 | 1.00 | 44.94 | 2704.37 | 1 |
| 58 | 72.13 | 144.13 | 1.00 | 45.00 | 2659.42 | 2 |
| 57 | 72.20 | 144.20 | 1.00 | 45.07 | 2614.42 | 3 |
| 56 | 72.27 | 144.27 | 1.00 | 45.13 | 2569.35 | 4 |
| 55 | 72.33 | 144.33 | 1.00 | 45.19 | 2524.22 | 5 |
| 54 | 72.40 | 144.40 | 1.00 | 45.25 | 2479.03 | 6 |
| 53 | 72.47 | 144.47 | 1.00 | 45.32 | 2433.78 | 7 |
| 52 | 72.53 | 144.53 | 1.00 | 45.38 | 2388.46 | 8 |
| 51 | 72.60 | 144.60 | 1.00 | 45.44 | 2343.08 | 9 |
| 50 | 72.67 | 144.67 | 1.00 | 45.51 | 2297.63 | 10 |
| 49 | 72.73 | 144.73 | 1.00 | 45.57 | 2252.13 | 11 |
| 48 | 72.80 | 144.80 | 1.00 | 45.63 | 2206.56 | 12 |
| 47 | 72.87 | 144.87 | 1.00 | 45.69 | 2160.93 | 13 |
| 46 | 72.93 | 144.93 | 1.00 | 45.76 | 2115.24 | 14 |
| 45 | 73.00 | 145.00 | 1.00 | 45.82 | 2069.48 | 15 |
| 44 | 73.07 | 145.07 | 1.00 | 45.88 | 2023.66 | 16 |
| 43 | 73.13 | 145.13 | 1.00 | 45.95 | 1977.78 | 17 |
| 42 | 73.20 | 145.20 | 1.00 | 46.01 | 1931.83 | 18 |
| 41 | 73.27 | 145.27 | 1.00 | 46.07 | 1885.82 | 19 |
| 40 | 73.33 | 145.33 | 1.00 | 46.13 | 1839.75 | 20 |
| 39 | 73.40 | 145.40 | 1.00 | 46.20 | 1793.61 | 21 |
| 38 | 73.47 | 145.47 | 1.00 | 46.26 | 1747.42 | 22 |
| 37 | 73.53 | 145.53 | 1.00 | 46.32 | 1701.16 | 23 |
| 36 | 73.60 | 145.60 | 1.00 | 46.39 | 1654.83 | 24 |
| 35 | 73.67 | 145.67 | 1.00 | 46.45 | 1608.44 | 25 |
| 34 | 73.73 | 145.73 | 1.00 | 46.51 | 1561.99 | 26 |
| 33 | 73.80 | 145.80 | 1.00 | 46.58 | 1515.48 | 27 |
| 32 | 73.87 | 145.87 | 1.00 | 46.64 | 1468.90 | 28 |
| 31 | 73.93 | 145.93 | 1.00 | 46.70 | 1422.26 | 29 |
| 30 | 74.00 | 146.00 | 1.00 | 46.77 | 1375.55 | 30 |
| 29 | 73.93 | 145.93 | 1.00 | 46.70 | 1328.79 | 31 |
| 28 | 73.87 | 145.87 | 1.00 | 46.64 | 1282.08 | 32 |
| 27 | 73.80 | 145.80 | 1.00 | 46.58 | 1235.44 | 33 |
| 26 | 73.73 | 145.73 | 1.00 | 46.51 | 1188.86 | 34 |
| 25 | 73.67 | 145.67 | 1.00 | 46.45 | 1142.35 | 35 |
| 24 | 73.60 | 145.60 | 1.00 | 46.39 | 1095.90 | 36 |
| 23 | 73.53 | 145.53 | 1.00 | 46.32 | 1049.51 | 37 |
| 22 | 73.47 | 145.47 | 1.00 | 46.26 | 1003.19 | 38 |
| 21 | 73.40 | 145.40 | 1.00 | 46.20 | 956.93 | 39 |
| 20 | 73.33 | 145.33 | 1.00 | 46.13 | 910.73 | 40 |
| 19 | 73.27 | 145.27 | 1.00 | 46.07 | 864.60 | 41 |
| 18 | 73.20 | 145.20 | 1.00 | 46.01 | 818.53 | 42 |
| 17 | 73.13 | 145.13 | 1.00 | 45.94 | 772.52 | 43 |
| 16 | 73.07 | 145.07 | 1.00 | 45.88 | 726.58 | 44 |
| 15 | 73.00 | 145.00 | 1.00 | 45.82 | 680.69 | 45 |
| 14 | 72.93 | 144.93 | 1.00 | 45.76 | 634.87 | 46 |
| 13 | 72.87 | 144.87 | 1.00 | 45.69 | 589.12 | 47 |
| 12 | 72.80 | 144.80 | 1.00 | 45.63 | 543.43 | 48 |
| 11 | 72.73 | 144.73 | 1.00 | 45.57 | 497.80 | 49 |
| 10 | 72.67 | 144.67 | 1.00 | 45.50 | 452.23 | 50 |
| 9 | 72.60 | 144.60 | 1.00 | 45.44 | 406.72 | 51 |
| 8 | 72.53 | 144.53 | 1.00 | 45.38 | 361.28 | 52 |
| 7 | 72.47 | 144.47 | 1.00 | 45.32 | 315.90 | 53 |
| 6 | 72.40 | 144.40 | 1.00 | 45.25 | 270.59 | 54 |
| 5 | 72.33 | 144.33 | 1.00 | 45.19 | 225.33 | 55 |
| 4 | 72.27 | 144.27 | 1.00 | 45.13 | 180.14 | 56 |
| 3 | 72.20 | 144.20 | 1.00 | 45.07 | 135.01 | 57 |
| 2 | 72.13 | 144.13 | 1.00 | 45.00 | 89.95 | 58 |
| 1 | 72.07 | 144.07 | 1.00 | 44.94 | 44.94 | 59 |
| 0 | 72.00 | 144.00 | 1.00 | 0.00 | 0.00 | 60 |