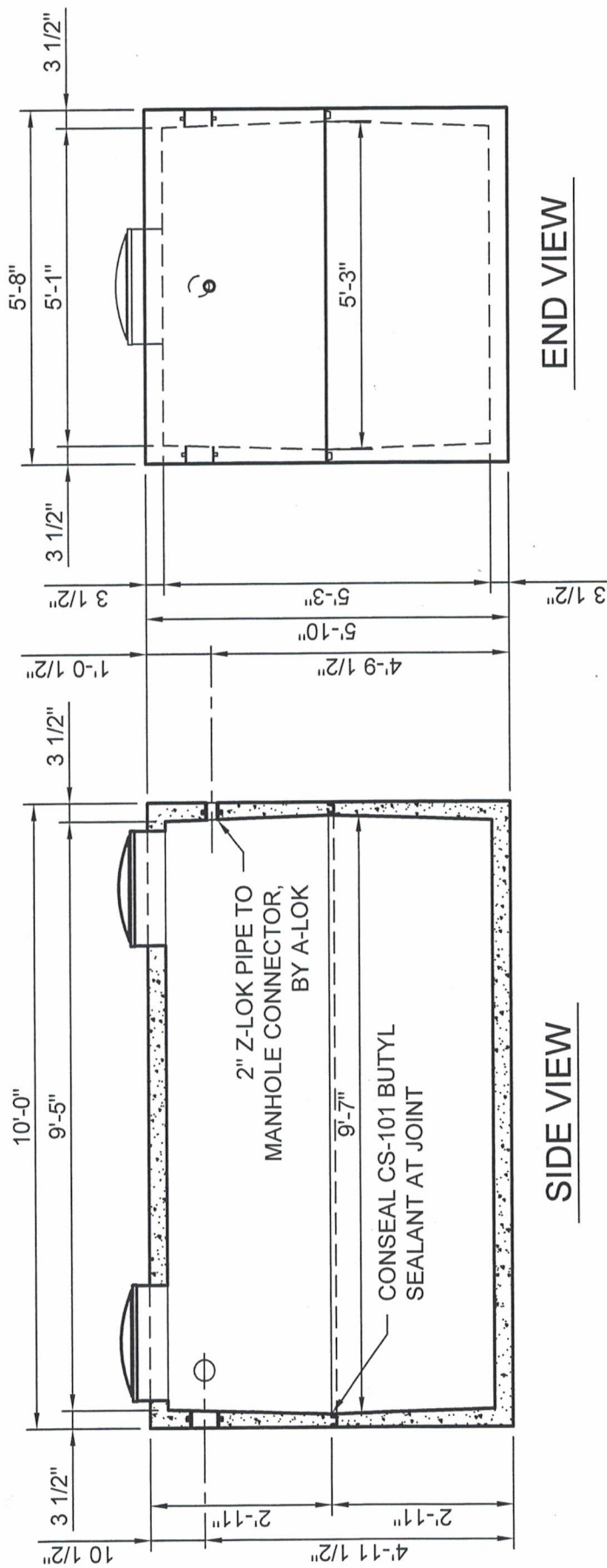


4" POLY IV HIGH PRESSURE CLOSED END SEAL, BY POLYLOK (TYP OF 3)

6" PLASTIC RISER WITH 20" RISER LID, BY TUF-TITE

3"Ø PVC PIPE FOR ELECTRICAL CONTROLS AND SERVICE

PLAN VIEW



SIDE VIEW

END VIEW

Stiger
Precast, Inc.
17793 St Hwy. 231
Nevada, OH 44849
740-482-2313
800-426-2116

Scale: 3/8" = 1'-0"
Date: 12/22/2015

1,500 GALLON
LIFT STATION

Dwg No. **LS 1500**

Stiger Precast, Inc.

1,500 Gallon Lift Station

Water Depth (IN)	Tank Width (IN)	Tank Length (IN)	Change In Depth (IN)	Incremental Change in Volume (GAL)	Tank volume (Gal)	Distance From Inside Top Of Tank To Water (Gal)
63	61.00	113.00	1.00	29.84	1927.59	0
62	61.06	113.06	1.00	29.89	1897.76	1
61	61.13	113.13	1.00	29.93	1867.87	2
60	61.19	113.19	1.00	29.98	1837.94	3
59	61.25	113.25	1.00	30.03	1807.96	4
58	61.32	113.32	1.00	30.08	1777.93	5
57	61.38	113.38	1.00	30.13	1747.85	6
56	61.44	113.44	1.00	30.17	1717.72	7
55	61.51	113.51	1.00	30.22	1687.55	8
54	61.57	113.57	1.00	30.27	1657.33	9
53	61.63	113.63	1.00	30.32	1627.06	10
52	61.70	113.70	1.00	30.37	1596.74	11
51	61.76	113.76	1.00	30.41	1566.38	12
50	61.83	113.83	1.00	30.46	1535.96	13
49	61.89	113.89	1.00	30.51	1505.50	14
48	61.95	113.95	1.00	30.56	1474.99	15
47	62.02	114.02	1.00	30.61	1444.43	16
46	62.08	114.08	1.00	30.66	1413.82	17
45	62.14	114.14	1.00	30.70	1383.17	18
44	62.21	114.21	1.00	30.75	1352.46	19
43	62.27	114.27	1.00	30.80	1321.71	20
42	62.33	114.33	1.00	30.85	1290.91	21
41	62.40	114.40	1.00	30.90	1260.06	22
40	62.46	114.46	1.00	30.95	1229.16	23
39	62.52	114.52	1.00	31.00	1198.21	24
38	62.59	114.59	1.00	31.04	1167.22	25
37	62.65	114.65	1.00	31.09	1136.17	26
36	62.71	114.71	1.00	31.14	1105.08	27
35	62.78	114.78	1.00	31.19	1073.94	28
34	62.84	114.84	1.00	31.24	1042.75	29
33	62.90	114.90	1.00	31.29	1011.51	30
32	62.97	114.97	0.50	15.67	980.22	31
31.5	63.00	115.00	0.50	15.68	964.55	31.5
31	62.97	114.97	1.00	31.34	948.87	32
30	62.90	114.90	1.00	31.29	917.54	33
29	62.84	114.84	1.00	31.24	886.25	34
28	62.78	114.78	1.00	31.19	855.01	35
27	62.71	114.71	1.00	31.14	823.82	36
26	62.65	114.65	1.00	31.09	792.68	37
25	62.59	114.59	1.00	31.04	761.58	38
24	62.52	114.52	1.00	31.00	730.54	39
23	62.46	114.46	1.00	30.95	699.54	40
22	62.40	114.40	1.00	30.90	668.60	41
21	62.33	114.33	1.00	30.85	637.70	42
20	62.27	114.27	1.00	30.80	606.85	43
19	62.21	114.21	1.00	30.75	576.05	44
18	62.14	114.14	1.00	30.70	545.29	45
17	62.08	114.08	1.00	30.66	514.59	46
16	62.02	114.02	1.00	30.61	483.93	47
15	61.95	113.95	1.00	30.56	453.33	48
14	61.89	113.89	1.00	30.51	422.77	49
13	61.83	113.83	1.00	30.46	392.26	50
12	61.76	113.76	1.00	30.41	361.79	51
11	61.70	113.70	1.00	30.37	331.38	52
10	61.63	113.63	1.00	30.32	301.01	53
9	61.57	113.57	1.00	30.27	270.70	54
8	61.51	113.51	1.00	30.22	240.43	55
7	61.44	113.44	1.00	30.17	210.21	56
6	61.38	113.38	1.00	30.13	180.03	57
5	61.32	113.32	1.00	30.08	149.91	58
4	61.25	113.25	1.00	30.03	119.83	59
3	61.19	113.19	1.00	29.98	89.80	60
2	61.13	113.13	1.00	29.93	59.82	61
1	61.06	113.06	1.00	29.89	29.89	62
0	61.00	113.00	0.00	0.00	0.00	63