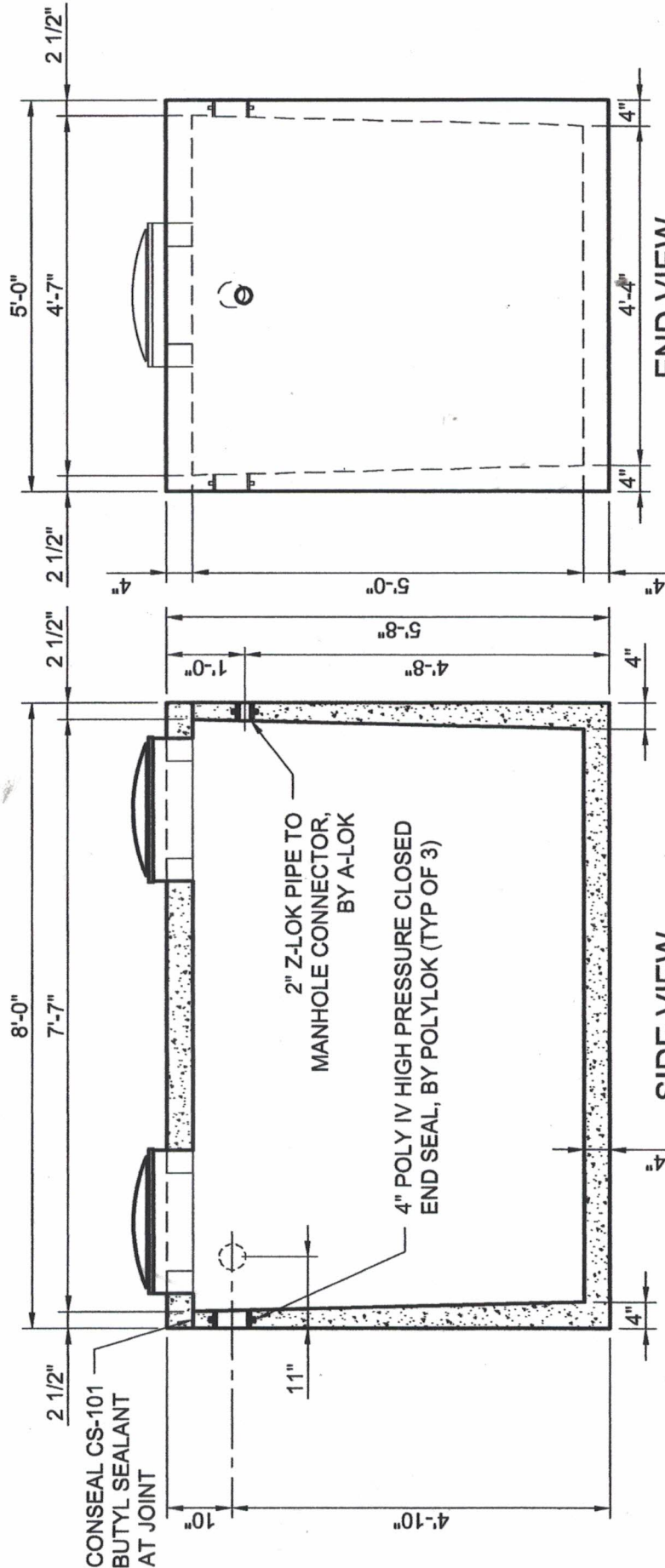


15"x15" OPENING

6" PLASTIC RISER WITH 20" RISER LID, BY TUF-TITE

3"Ø PVC PIPE FOR ELECTRICAL CONTROLS AND SERVICE

PLAN VIEW



5'-0"

4'-7"

2 1/2"

2 1/2"

8'-0"

7'-7"

2 1/2"

CONSEAL CS-101 BUTYL SEALANT AT JOINT

10"

2" Z-LOK PIPE TO MANHOLE CONNECTOR, BY A-LOK

4" POLY IV HIGH PRESSURE CLOSED END SEAL, BY POLYLOK (TYP OF 3)

4'-9"

5'-8"

1'-0"

4"

4"

4"

4"

4"

4"

4"

4"

4"

4"

4"

SIDE VIEW

END VIEW

Scale: 1/2" = 1'-0"
Date: 12/22/2015

Dwg No. LS 1000

1,000 GALLON LIFT STATION

Stiger Precast, Inc.
17793 St Hwy. 231
Nevada, OH 44849
740-482-2313
800-426-2116

Stiger Precast, Inc.

1,000 Gallon Lift Station

Water Depth (IN)	Tank Width (IN)	Tank Length (IN)	Change In Depth (IN)	Incremental Change in Volume (GAL)	Tank volume (Gal)	Distance From Inside Top Of Tank To Water (Gal)
62	45	95	1	18.51	1147.32	0
61	45	95	1	18.51	1128.82	1
60	45	95	1	18.51	1110.31	2
59	45	95	1	18.51	1091.81	3
58	45	95	1	18.51	1073.30	4
57	45	95	1	18.51	1054.80	5
56	45	95	1	18.51	1036.29	6
55	45	95	1	18.51	1017.79	7
54	45	95	1	18.51	999.28	8
53	45	95	1	18.51	980.78	9
52	45	95	1	18.51	962.27	10
51	45	95	1	18.51	943.77	11
50	45	95	1	18.51	925.26	12
49	45	95	1	18.51	906.76	13
48	45	95	1	18.51	888.25	14
47	45	95	1	18.51	869.74	15
46	45	95	1	18.51	851.24	16
45	45	95	1	18.51	832.73	17
44	45	95	1	18.51	814.23	18
43	45	95	1	18.51	795.72	19
42	45	95	1	18.51	777.22	20
41	45	95	1	18.51	758.71	21
40	45	95	1	18.51	740.21	22
39	45	95	1	18.51	721.70	23
38	45	95	1	18.51	703.20	24
37	45	95	1	18.51	684.69	25
36	45	95	1	18.51	666.19	26
35	45	95	1	18.51	647.68	27
34	45	95	1	18.51	629.18	28
33	45	95	1	18.51	610.67	29
32	45	95	1	18.51	592.17	30
31	45	95	1	18.51	573.66	31
30	45	95	1	18.51	555.16	32
29	45	95	1	18.51	536.65	33
28	45	95	1	18.51	518.15	34
27	45	95	1	18.51	499.64	35
26	45	95	1	18.51	481.14	36
25	45	95	1	18.51	462.63	37
24	45	95	1	18.51	444.13	38
23	45	95	1	18.51	425.62	39
22	45	95	1	18.51	407.11	40
21	45	95	1	18.51	388.61	41
20	45	95	1	18.51	370.10	42
19	45	95	1	18.51	351.60	43
18	45	95	1	18.51	333.09	44
17	45	95	1	18.51	314.59	45
16	45	95	1	18.51	296.08	46
15	45	95	1	18.51	277.58	47
14	45	95	1	18.51	259.07	48
13	45	95	1	18.51	240.57	49
12	45	95	1	18.51	222.06	50
11	45	95	1	18.51	203.56	51
10	45	95	1	18.51	185.05	52
9	45	95	1	18.51	166.55	53
8	45	95	1	18.51	148.04	54
7	45	95	1	18.51	129.54	55
6	45	95	1	18.51	111.03	56
5	45	95	1	18.51	92.53	57
4	45	95	1	18.51	74.02	58
3	45	95	1	18.51	55.52	59
2	45	95	1	18.51	37.01	60
1	45	95	1	18.51	18.51	61
0	45	95	0	0.00	0.00	62