



Tylox® MIB Series

Mechanically Installed Boot Connectors Installation Instructions

Installation Instructions (All Styles)

- **Inspect hole in concrete wall** and ensure it is free from debris and defects. All sharp edges should be removed and cracks, pits and holes should be filled with patch compound.

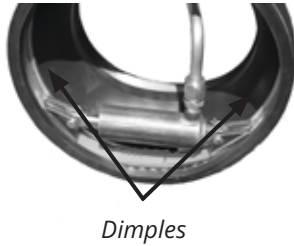
Follow the instructions listed below for the specific type of boot that you are installing.

Proper installation of this product is essential to ensuring its long-term performance. Please read the following instructions in full before completing the installation.

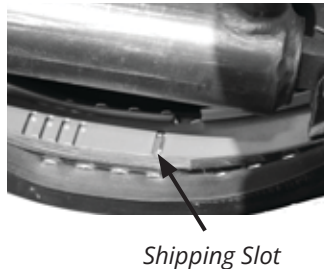


Adjustable Style Connectors

- Completely retract the jack cylinder, then place it into the connector from the pipe side, and let it rest between the two "dimples" located at the 4 o'clock and 8 o'clock positions.



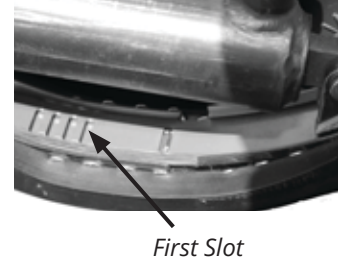
- Using the hand pump, extend the jack cylinder just enough to hold the jack in place, without forcing the tongue out of the shipping slot.



- Place the connector into the hole and position it such that it is centered within the wall, aligned both vertically and horizontally, and the tongue is at the 6 o'clock position.



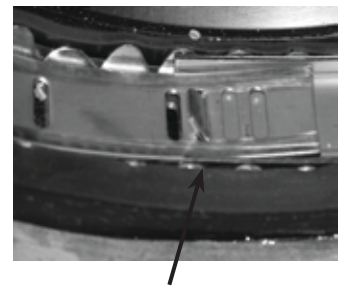
- Using the hand pump, extend the jack cylinder until the tongue engages the first slot while holding the connector secure with one hand. At this point the connector need no longer be manually secured.



- Continue pumping until the tongue engages in a slot, with the gauge reading between 2200 and 3800 psig.



- Ensure that the tongue is fully engaged in the slot, then slowly open the bleed valve on the hand pump to relieve the pressure, retracting the jack, and allowing its removal.



**Making Infrastructure Watertight Today
for a Greener, Sustainable Tomorrow**

Cobra Style Connectors

- Place the connector into the hole and position it such that it is centered within the wall, aligned both vertically and horizontally, and the Cobra mechanism is at the 12 o'clock position.



- Using the HK torque wrench or a suitable 3/8" – drive adjustable torque wrench with a 9/16" deep socket, **tighten the Cobra mechanism to:**



Nominal Hole Size	Torque
7" & 8"	6 ft.lb
10.5" thru 20"	12 ft.lb

Pipe Installation Instructions (All Styles)

- Chamfer and deburr the connecting pipe end (note that lubrication of the pipe end is not required) and insert into the connector, *ensuring that the pipe does not rest on the connector hoop or adjustment mechanism.*
- Tighten the external clamp, or clamps, to a minimum of 80 in.lb.

It is our recommendation that all connecting pipe stubs be restrained from movement during testing (vacuum and/or hydrostatic). Pipe stub restraints should remain in place until future tie-in of the line is completed.

NOTICE

DO NOT use power tools. Use hand tools only to install the boot, the use of power tools may damage the boot mechanism. For the optimum performance of the boot connector, use a torque wrench to tighten the nut to the listed value above.

NOTICE

The bolts in the Cobra wedges are pre-lubricated to ease installation. **DO NOT** apply any additional thread pastes or lubricants as they may not be chemically compatible with non-metallic components.

HK **Hamilton Kent**
Sealing Your Connection

TEL: (800) 268 8479
FAX: (888) 674 6960
WEB: www.hamiltonkent.com
E-MAIL: information@hamiltonkent.com